

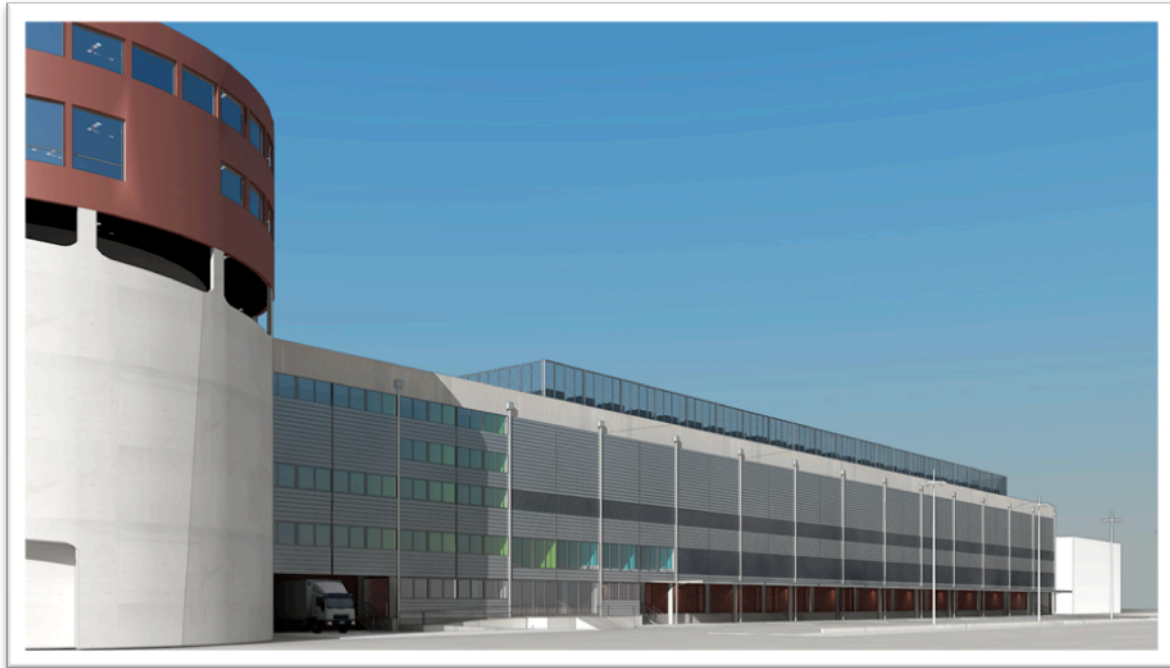
### PREMIUM ENVIRONMENTALLY RESPONSIBLE HOSTING

**Address:** 110 bis avenue du Général Leclerc – 93500 Pantin, France.

**Availability:** Site delivery on 31 July 2012.

**Hosting capacity:** 14,400 kW operating power will be available.

**Architecture:** Tier 3+.



**PROJECT:** It consists of a former logistics centre, with a total net floor area of 22,390 m<sup>2</sup>, reorganised by Equinix (the world's leading supplier of hosting services) as a latest-generation Data Centre, which will eventually be able to host up to 11,500 m<sup>2</sup> of IT rooms.

**SITE:** The entire building is surrounded by a privately owned heavy-duty road and by a reinforced fence with a height of two metres.

**ACCESS:** The site is very easy to reach from the Paris *Périphérique* and *Francilienne* ring roads. The building has 102 parking spaces for light vehicles within its secured enclosure as well as 80 spaces for two-wheeled vehicles. As for public transport, the site is reasonably close to the RER (line E) and Métro (lines 5 and 7).

#### ENVIRONMENTALLY RESPONSIBLE ETHICS:

- Reduced carbon footprint by reusing a large existing site.
- Project designed in accordance with clean "Eco-Site" practices.
- PUE of less than 1.5, mainly due to the use of free-cooling and cold-corridor systems.
- Efficient waste recycling.
- Strict technical specifications imposed on every customer.
- Full, real-time reporting available for customers.

### TECHNICAL INFORMATION

*The technical facilities have been designed to offer impeccable levels of reliability and availability, to guarantee the expected level of service and to ensure permanent operation of critical facilities, 24 hours a day, 365 days a year. SPOFs (Single Point Of Failure) that may affect their operation are not considered.*

*The technical architecture in place allows the facilities to be serviced, the equipment to be replaced and the site to be upgraded without affecting the power supply of the computer equipment and without any service interruptions.*

#### **ELECTRICITY:**

- Double 32 MW power supply to the site from two separate MV grids.
- For each module, high-quality power supplied by four poles with N+1 redundancy.
- Each pole is provided with an exclusive power generator, static UPS systems with N+1 redundancy and its own set of batteries.
- Power supply with double connection for IT equipment.

#### **AIR CONDITIONING:**

- Ice-water production units using free-cooling technology with air condensers and a glycol-free system.
- For each module, cooling energy provided by six cooling units with N+1 redundancy.
- IT rooms treated with air-conditioning units with N+20% redundancy.
- Smoke ejection in the rooms according to Technical Instruction 246.

#### **SECURITY:**

- Physical security (guards, video surveillance, access control and intruder detection).
- Fire safety (VESDA multi-point detection and automatic deluge, dry-pipe or pre-action fire-extinguishing systems).
- ENMS (Electrical Network Monitoring System) and BMS (Building Management System).

#### **TELECOM NETWORKS:**

- Two operator rooms (*Meet-Me-Room*), each supplied by 18 optical fibre ducts.
- Main operators in the Paris region connected to the site with double feed.

#### **MAINTENANCE AND OPERATION:**

- Entire building managed by Equinix, in particular as regards security, facility monitoring, technical maintenance and upkeep of the rooms.

#### **OFFICES AND OTHER ROOMS:**

- 1,000 m<sup>2</sup> of rooms available (shared working rooms, private offices, meeting rooms equipped with video-conferencing systems).
- Canteen and dressing rooms also available.
- Possibility of arranging hundreds of fallback positions.
- Preparation area with racks, increased ventilation and assorted tools.
- Shared or exclusive storage areas available.